

General Practice Reach Out Campaign

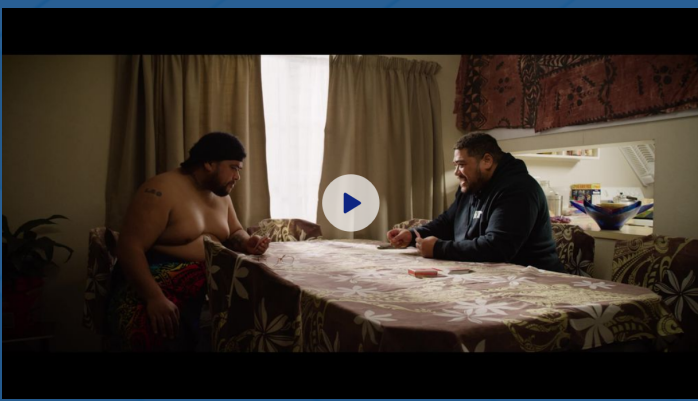
Reach out to your patients and whānau by encouraging access to primary care particularly telehealth consultations

Encouraging patients and whānau, to access care via telehealth modalities' is becoming the "new normal". A telehealth consultation is where a consultation does not take place with the patient in-person but by phone, video, email, or messaging application. This enables a broader range of healthcare delivery and for patients to have more choices with meeting their individual needs.

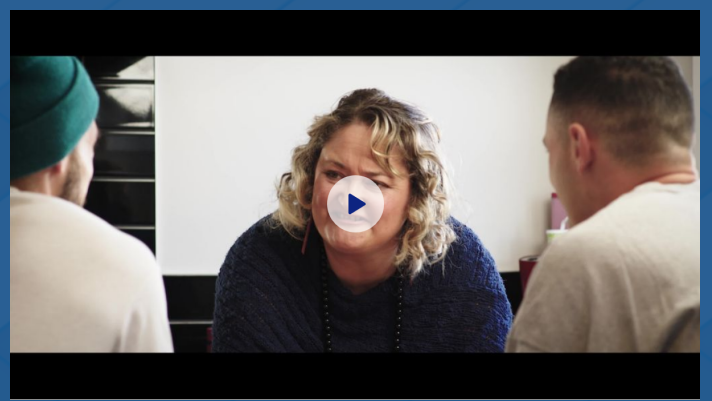
With this in mind, available are some ready-made video resources that you may find useful to re-post on your social media or websites that encourage patients and whānau to access their general practice team particularly promoting the use of Telehealth consultations.



Reach out and access your general practice



Encouraging diabetes checks

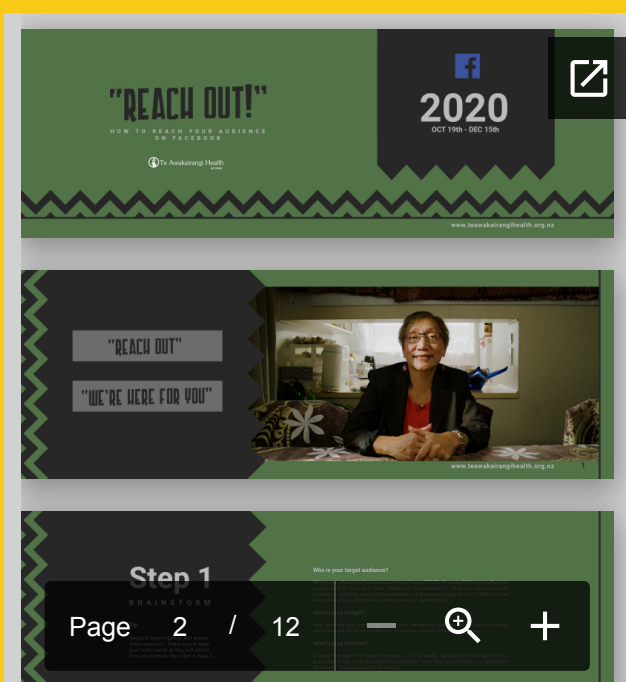


Virtual Nan - Video Consults

We would like to thank and acknowledge the local community talent featuring in these videos and The Māori Sidesteps, Te Awakairangi Health Network and community partners, Health Care Home National Collaborative, and Te Hiringa Hauora for providing innovative ways to reach our communities

For more resources and support on Telehealth options please visit the Health Care Home National Collaborative interactive model of care: <https://my.visme.co/view/mxrkqr08-13-1-alternatives-to-in-person-consults-2>

"How to" Guidelines on reaching your communities through social media



Social media platforms, such as Facebook, are great ways to connect with your communities to provide regular updates or key messages about your practice, as our way of life continues to evolve during these times.

This "Reach Out" Guide provides a step by step guide on how to reach out through social media platforms. It also shows how to download these videos and put them on to your website or social media.